

Please indicate location of repair



**northern uniform**  
keeping promises since 1901

## RED ALERT™ TAG

**NAME:** \_\_\_\_\_



**REPAIR NEEDED**

- Hole or tear
- Button/snap
- Zipper
- Pocket
- Shorten legs \_\_\_\_\_ inches
- Lengthen legs \_\_\_\_\_ inches
- Repair hem or cuff
- Size change to \_\_\_\_\_
- Worn out - please replace
- Need company crest
- Name crest should read: \_\_\_\_\_

**This change applies for:**  
 This garment only     All

**OFFICE USE ONLY**

ACCT# \_\_\_\_\_

ITEM# \_\_\_\_\_

MAN# \_\_\_\_\_ LOCKER# \_\_\_\_\_

B/C# \_\_\_\_\_



Scan to see how Red Alert™ Tag works

registered to  
**ISO 9001**

registered to  
**ISO 22000**

## Red Alert™ Tag:

Your Quick & Effective Communication Tool for Garment Repairs

### Guide book

Thank you for choosing **Northern Uniform Service** for your garment rental needs.

We inspect every garment turned in for obvious repairs, but the **Red Alert™ Tag** system can help be sure nothing gets missed.

The details are entered into our automated system and RFID technology directs the garment to the correct location for action.

In this guide, we will explain how to properly use the **Red Alert™ Tag** for garment repairs.

## STEP 1

### IDENTIFYING THE GARMENT

Before applying the Red Alert™ Tag, carefully inspect the garment that requires repair.

Look for any visible damages such as rips, tears, missing buttons, broken zippers, or any other issues that need attention.

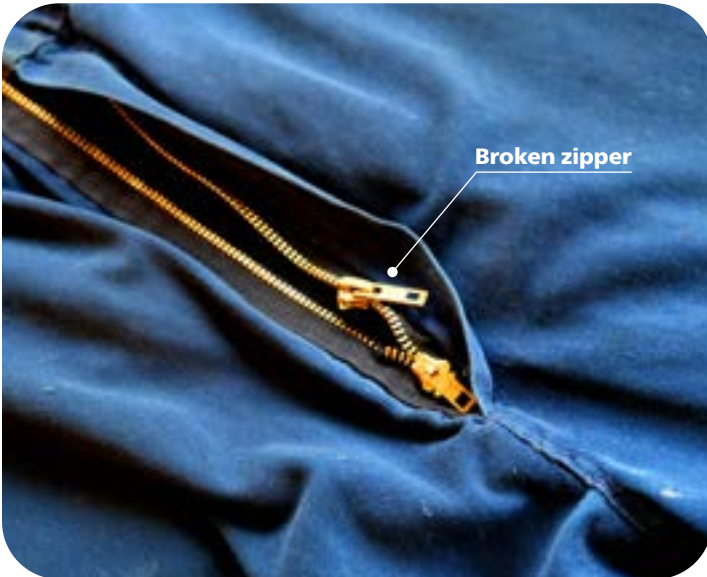
Ensure that you have identified the specific garment in need of repair.

## STEP 2

### FILLING IN THE TAG

Please make sure to fill your needed information in the tag:

1. Specify the repair needed by checking off the boxes that apply to you.
2. Indicate the location of repair by circling on the illustration.
3. Select the quantity that this change applies to - ONE or ALL.



### Remember:

- Please specify the inches if you wish to shorten or lengthen the legs.
- Please write correct spelling for the name crest.

### STEP 3

#### ATTACHING THE RED ALERT™ TAG

Locate the damaged area on the garment and attach the Red Alert™ Tag securely. Ensure that the tag is visible and will not detach during use.

If there are multiple garments to be repaired, please put a tag on every one of them.

### STEP 4

#### SUBMITTING TAGGED GARMENT

Here's how you can proceed:

- Locate the **Red Alert™ Drop Chute** at your facility. It is typically positioned in a convenient area accessible to employees.
- Place the tagged garments securely inside the chute. Ensure that the Red Alert™ Tag is clearly visible to our team.
- Our Service Specialist will collect the garments during their regular visit and process the repairs accordingly.

#### Please note:

If you don't have a **Red Alert™ Drop Chute** at your facility, please hand the garment to your key contact or to our Service Specialist directly.

**STILL HAVE QUESTIONS?**

We have people standing by to talk to you. We appreciate your cooperation.

Ask us anything about  
our **flexible** uniform rental program.



**Northern Ontario Office**

2230 Algonquin Road, Sudbury, ON P3E 4Z6

Tel: **705-522-7368** Fax: **705-522-1812**

**1-888-49NORTH**

**Southern Ontario Office**

45 Reagens Industrial Parkway, Bradford, ON L3Z 2A4

Tel: **905-778-1854** Fax: **905-778-1833**

**1-888-41NORTH**



[www.northernuniform.com](http://www.northernuniform.com)



[image@northernuniform.com](mailto:image@northernuniform.com)